



**V-BOT**<sup>®</sup>

# Instruction Manual



**VTech understands that a child's needs and abilities change as they grow and with that in mind we develop our toys to teach and entertain at just the right level...**

## **vtech** Baby

**Toys that will stimulate their interest in different textures, sounds and colours**

### **I am...**

...responding to colours, sounds and textures

...understanding cause and effect

...learning to touch, reach, grasp, sit-up, crawl and toddle

**Birth-36 months**



## **Pre-School**

**Interactive toys to develop their imagination and encourage language development**

### **I want...**

...to get ready for school by starting to learn the alphabet and counting

...my learning to be as fun, easy and exciting as can be

...to show my creativity with drawing and music so my whole brain develops

**3-6 years**



**4-10 years**



## **Electronic Learning Computers**

**Cool, aspirational and inspiring computers for curriculum related learning**

### **I need...**

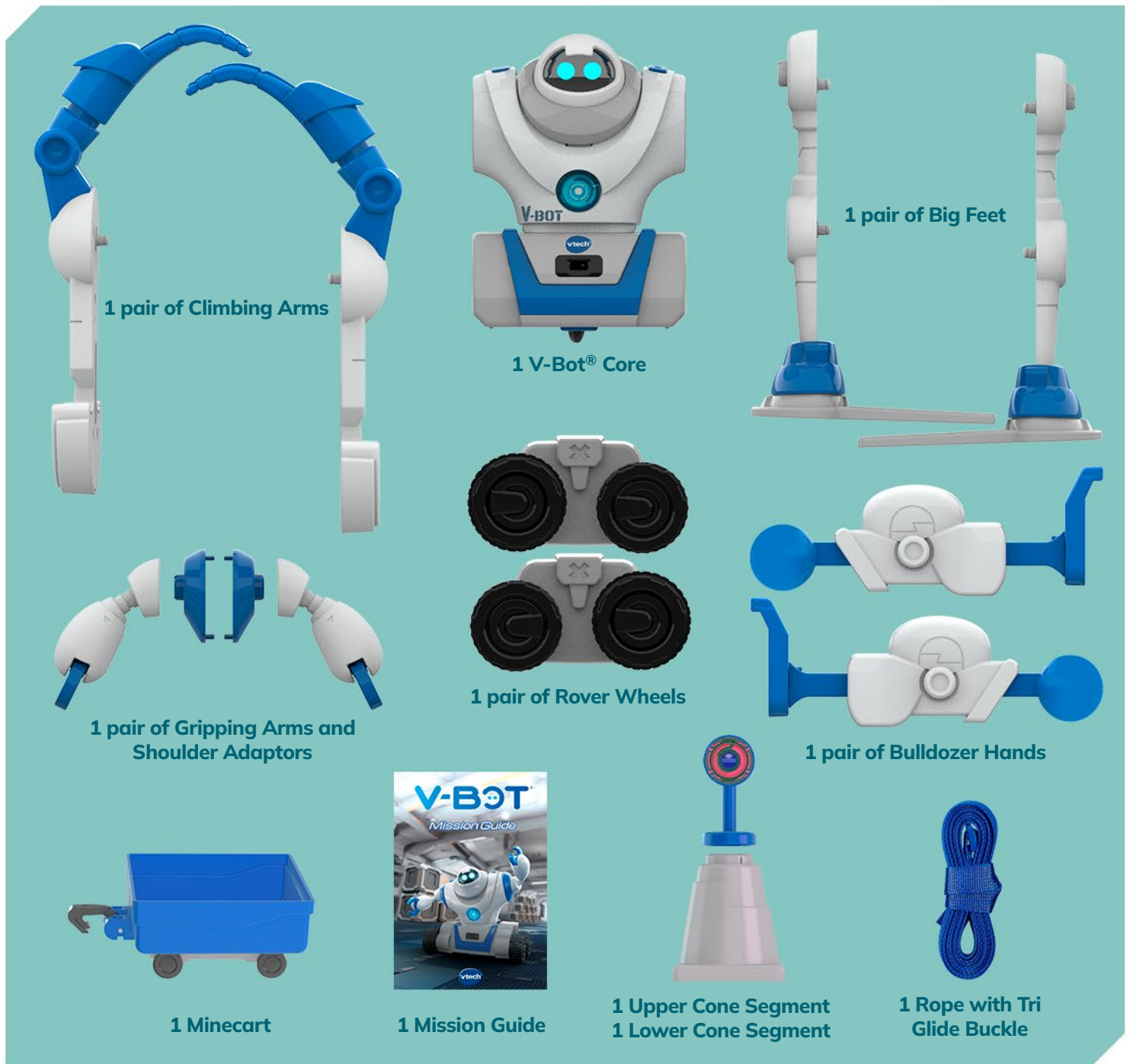
...challenging activities that can keep pace with my growing mind

...intelligent technology that adapts to my level of learning

...National Curriculum based content to support what I'm learning at school



# Included in the Package



## WARNING:

All packing materials such as tape, plastic sheets, packaging locks, removable tags, cable ties, cords and packaging screws are not part of this toy, and should be discarded for your child's safety.

Not suitable for children under three years. Choking and strangulation hazards. This toy contains small parts and long cord.

## NOTE:

Please save this Instruction Manual as it contains important information.

# Features

Circle Button/  
Mission Selection

Arrow Buttons

Obstacle Detector

Sound  
Sensor

Piece Connectors

Power Switch and  
Steering Lock Switch

Speaker

Cart Connector

Obstacle  
Detector



## Power Switch

Switch to either  or  to power V-Bot® ON. Switch it to  to power V-Bot® OFF.



## Steering Lock Switch

Switch to  to enable or to  to disable V-Bot® to turn when moving with Rover Wheels. Disable the switch when playing missions.



## Arrow Buttons

Set V-Bot® to move or to change the selection in Mission Selection.



## Circle Button / Mission Selection

Press this to select a mission, or to confirm a selection.

## Piece Connectors

Connect parts to the connectors whilst making sure to match up with the correct markings.

## Obstacle Detectors

V-Bot® detects obstacles or movements with these detectors.

## Sound Sensor

V-Bot® detects claps to start patrolling, or respond in the Ice Walker Mission.

## Cart Connector

Connect V-Bot® to the Minecart's hook for V-Bot® to pull it along.

# Instructions

## Battery Removal and Installation

1. Make sure the unit is turned Off.
2. Locate the battery cover on the bottom of the unit. Use a screwdriver to loosen the screw and then open the battery cover.
3. If used batteries are present, remove these batteries from the unit by pulling up on one end of each battery.
4. Install 4 new AA (AM-3/LR6) batteries following the diagram inside the battery box. (For best performance, alkaline batteries or fully charged Ni-MH rechargeable batteries are recommended.)
5. Replace the battery cover and tighten the screw to secure.

### **WARNING:**

**Adult assembly required for battery installation.  
Keep batteries out of reach of children.**

## Important: Battery Information

- Insert batteries with the correct polarity (+ and -).
- Do not mix old and new batteries.
- Do not mix alkaline, standard (carbon-zinc) or rechargeable batteries.
- Only batteries of the same or equivalent type as recommended are to be used.
- Do not short-circuit the supply terminals.
- Remove batteries during long periods of non-use.
- Remove exhausted batteries from the toy.
- Dispose of batteries safely. Do not dispose of batteries in fire.

## Rechargeable Batteries

- Remove rechargeable batteries (if removable) from toy before charging.
- Rechargeable batteries are only to be charged under adult supervision.
- Do not charge non-rechargeable batteries.

## Disposal of batteries and product



The crossed-out wheelee bin symbols on products and batteries, or on their respective packaging, indicates they must not be disposed of in domestic waste as they contain substances that can be damaging to the environment and human health.

The chemical symbols Hg, Cd or Pb, where marked, indicate that the battery contains more than the specified value of mercury (Hg), cadmium (Cd) or lead (Pb) set out in the Batteries and Accumulators Regulation.



The solid bar indicates that the product was placed on the market after 13th August, 2005.

 Please dispose of your product and batteries responsibly.

In the UK, give this toy a second life by disposing of it at a small electricals collection point\* so all of its materials can be recycled.

Learn more at:

[www.vtech.co.uk/recycle](http://www.vtech.co.uk/recycle)  
[www.vtech.com.au/sustainability](http://www.vtech.com.au/sustainability)

\* Visit [www.recyclenow.com](http://www.recyclenow.com) to see a list of collection points near you.

**Q: My V-Bot® stops working after turning on.**

**A: Make sure V-Bot® has fully charged batteries inside. Replace the batteries with brand new batteries when necessary.**

**Q: Can I play with V-Bot® outdoors?**

**A: No. V-Bot® is designed to be played with indoors only. V-Bot® works best on a smooth and level floor.**

**Q: Can I stop in the middle of a mission?**

**A: Yes. Hold the circle button for 3 seconds to exit a mission.**

**Q: My V-Bot® cannot climb forward on the included rope.**

**A: Doubling the rope may help improve the climbing performance.**

**Q: Some of V-Bot's parts do not work/connect correctly and make clicking noises.**

**A: Make sure V-Bot's parts are assembled correctly by matching the symbols beside the connection points of the parts to those on V-Bot's core. See the Mission Guide for details.**

**Q: V-Bot® doesn't move in a straight line when equipped with the Rover Wheels.**

**A: Make sure the Steering Lock on the bottom of V-Bot® is switched to the Lock position.**

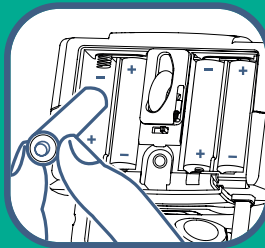
**Q: The front wheels of the Rover Wheels do not move.**

**A: It's normal. Two of the wheels are for assisting V-Bot's movement, they are not connected to the motor.**



# Getting Started

## 1 Insert Batteries (to be done by an adult)



- Locate the battery compartment at the bottom of V-Bot®.
- Loosen the screw of the battery compartment using a screwdriver and remove the cover.
- Insert four AA alkaline batteries as indicated inside the battery compartment.
- Replace the battery compartment cover and tighten the screw.

## 2 Power On



- Locate the Power Switch at the bottom of V-Bot®.
- Turn the switch to either of the other positions to turn On V-Bot® with Low or High volume.

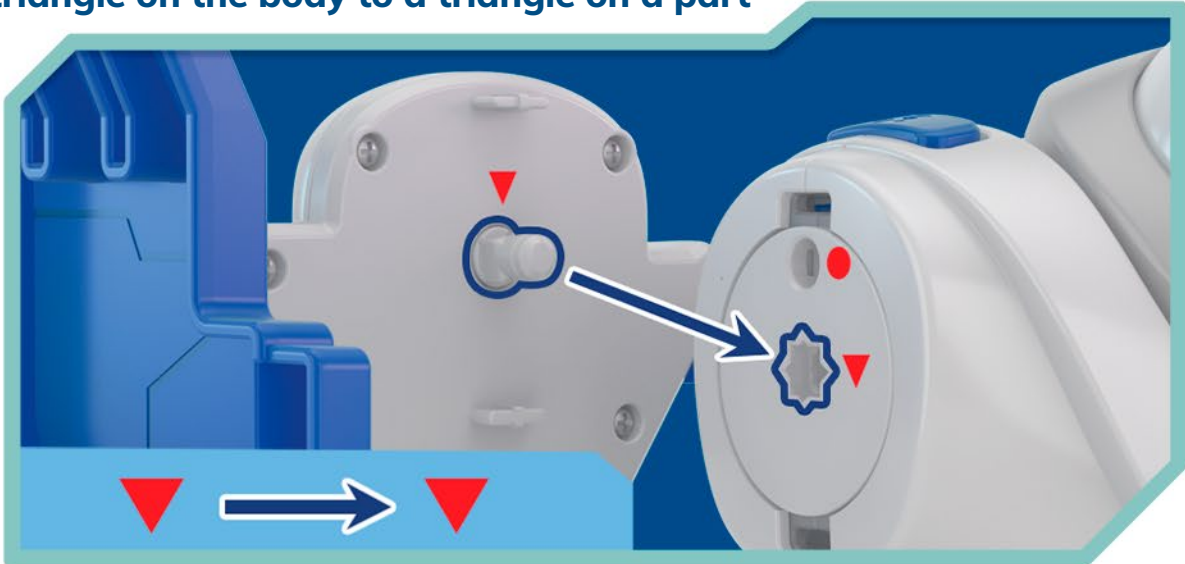
## 3 Let's Explore



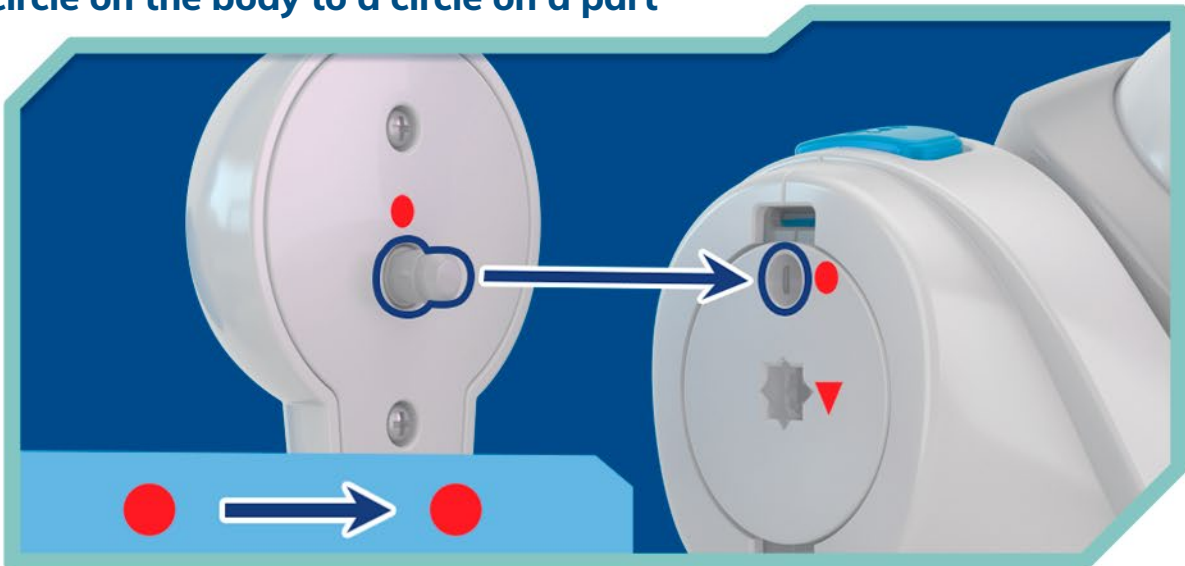
Explore more ways to learn and play with the included Mission Guide!

# How to Assemble

- To assemble V-Bot® into different forms, match the symbols on both side of the joints.
- A triangle on the body to a triangle on a part



- A circle on the body to a circle on a part



# How to Play

There are different ways to start an adventure with V-Bot®.

## Free Play


### Autonomous

Turn V-Bot® On, and then V-Bot® will move autonomously and explore the environment.

### Clap to Set V-Bot® to Patrol

Turn V-Bot® On. While V-Bot® is autonomous, clap to set V-Bot® to start patrolling. Press any key to stop it.

### Code V-Bot® to Move

Turn V-Bot® On. While V-Bot® is autonomous, press the arrow buttons  to input a move sequence. When it's done, wait 3 seconds and V-Bot® will execute the moves.

## Missions

- Turn V-Bot® On.
- While V-Bot® is in Free Play mode, press the circle button to enter the Mission Selection menu.
- use the arrow buttons to select one of the five missions. The name of the mission will be spoken aloud as you scroll through the missions.
- Press the circle button to play the mission.
- Listen to the voice instructions or follow the instructions on the included Mission Guide to play.
- To quit in the middle of a mission, press and hold the circle button for 3 seconds.

### Remark:

Make sure the Steering Lock Switch is turned to Off  when playing the missions.

## Mission 1: Asteroid Escape

Rover  
Wheels



- Equip V-Bot® with the Rover Wheels, and then press the circle button to start the game.
- V-Bot® demonstrates some moves. Observe the moves and remember them.
- Press the arrow buttons to repeat the moves. If the moves are correct, the game continues by adding one move to the sequence. Complete all of the rounds to win.

## Mission 2: Ice Walker

Big Feet



- Equip V-Bot® with the Big Feet, and then press the circle button to start.
- A melody will play while V-Bot® is walking.
- When the melody pauses, clap the number of times requested.
- If the number of claps is correct, V-Bot® will continue to walk, otherwise the game is over. Complete all of the rounds to win.

## Mission 3: Lava Crossing

Climbing  
Arms



- Equip V-Bot® with the Climbing Arms.
- Tie the ends of the included rope to fixed objects and hang V-Bot® on the rope with the equipped Climbing Arms. Press the circle button to start.
- V-Bot® will climb on the rope. When a warning signal occurs, wave in front of the Obstacle Detectors as soon as possible to change V-Bot's climbing direction. If V-Bot® cannot reverse climbing direction in time, the game is over. Complete all of the rounds to win.



## Mission 4: Barrier Breakaway



- Equip V-Bot® with the Bulldozer Hands.
- Place some small and light objects on the floor, and aim V-Bot® at the objects. Press the circle button to start moving.
- If V-Bot® cannot hit anything, the game is over. Hit the objects to win. There are three rounds per play.

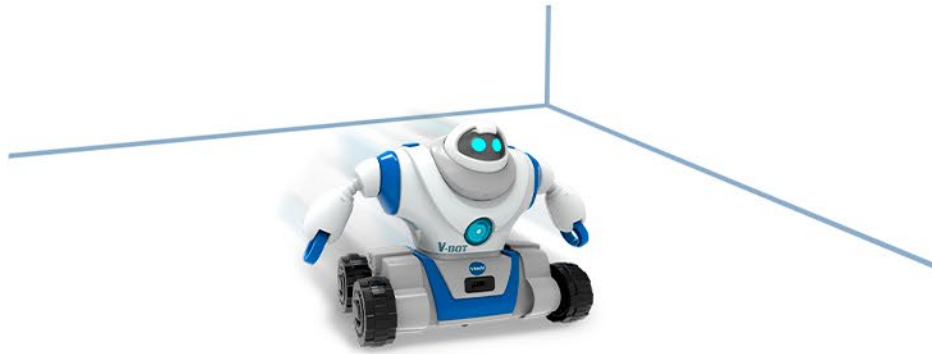
## Mission 5: Minecart Retrieval



- Equip V-Bot® with the Rover Wheels.
- Place the Minecart on the floor, and aim V-Bot® (the side with the Minecart Connector) at the Minecart's hook.
- Press the circle button to start moving. If V-Bot® successfully hooked the Minecart, V-Bot® will take the Minecart and return. There are three rounds per play.

# Tips

## Play Area



- DO play with V-Bot® on a flat and spacious floor. Playing on a table is not recommended, as V-Bot® loves exploring and may go beyond the edges!
- Flat, smooth surfaces are recommended for best performance.
- Playing with V-Bot® on thick rugs or carpets is not recommended, as V-Bot® may get stuck.

## Steering Lock Switch



- Switch the Steering Lock Switch to the Unlock position to enable steering variations. **IMPORTANT NOTE:** the Steering Lock Switch should be locked for the missions to work as intended.

## Caution Playing with the Climbing Arms and Rope

- The rope should not be fixed too high to avoid V-Bot® falling and hitting people or the ground.
- Make sure the ends of the rope are tied to sturdy and firm locations. Check the stability of the tied locations before proceeding.
- Make sure the rope is level and straight for best performance.

## Care & Maintenance

1. Keep the unit clean by wiping it with a slightly damp cloth.
2. Keep the unit out of direct sunlight and away from any direct heat sources.
3. Remove the batteries if the unit will not be in use for an extended period of time.
4. Do not drop the unit on hard surfaces and do not expose the unit to moisture or water.
5. If the unit is not working properly, install a brand new set of batteries.

## Environmental Phenomena

Electrostatic discharge may cause the unit to malfunction. If this occurs, reset the unit by sliding the Power Switch to OFF to turn off the unit. Then slide the Power Switch to the Low/High Volume Position to turn the unit on. Or remove the batteries for 10 seconds and then reinstall them, followed by powering on the unit.

## Consumer Services

Creating and developing VTech products is accompanied by a responsibility that we at VTech® take very seriously. We make every effort to ensure the accuracy of the information, which forms the value of our products. However, errors sometimes can occur. It is important for you to know that we stand behind our products and encourage you to call our Consumer Services Department with any problems and/or suggestions that you might have. A service representative will be happy to help you.

### UK Customers:

Phone: 0330 678 0149 (from UK) or +44 330 678 0149 (outside UK)

Website: [www.vtech.co.uk/support](http://www.vtech.co.uk/support)

### Australian Customers:

Phone: 1800 862 155

Website: [support.vtech.com.au](http://support.vtech.com.au)

### NZ Customers:

Phone: 0800 400 785

Website: [support.vtech.com.au](http://support.vtech.com.au)

## Product Warranty/Consumer Guarantees

### UK Customers:

Read our complete warranty policy online at [vtech.co.uk/warranty](http://vtech.co.uk/warranty).

### Australian Customers:

VTECH ELECTRONICS (AUSTRALIA) PTY LIMITED – CONSUMER GUARANTEES

Under the Australian Consumer Law, a number of consumer guarantees apply to goods and services supplied by VTech Electronics (Australia) Pty Limited.

Please refer to [vtech.com.au/consumerguarantees](http://vtech.com.au/consumerguarantees) for further information.

**Visit our website for more information  
about our products, downloads,  
resources and more.**

***[www.vtech.co.uk](http://www.vtech.co.uk)***  
***[www.vtech.com.au](http://www.vtech.com.au)***

